

Comparison with Other Schools

National Rank

A key way to evidence the excellent progress of pupils at Woodlane is by comparing available data with other schools. This published data is downloadable from: <https://www.compare-school-performance.service.gov.uk/download-data> and also available through Analyse School Performance. This is the full-dataset from all schools in the country and it is possible to filter down further to undertake direct comparisons with individual or groups/categories of schools.

The most realistic comparison is with SEND schools who cater for the same age ranges as Woodlane. This leaves a comparison with 459 similar schools. The number of Community SEND schools, (as the data describes them) fell by 33 from 492 schools in 2018, and there are 71 fewer than in 2017. Some of these school's results were suppressed due to small cohort sizes. When ranking all the schools by Progress 8, Attainment 8 or Total Attainment 8 scores, it is possible to see where Woodlane ranks nationally.

Progress and Attainment – Published Scores

Woodlane's published scores are as follows:

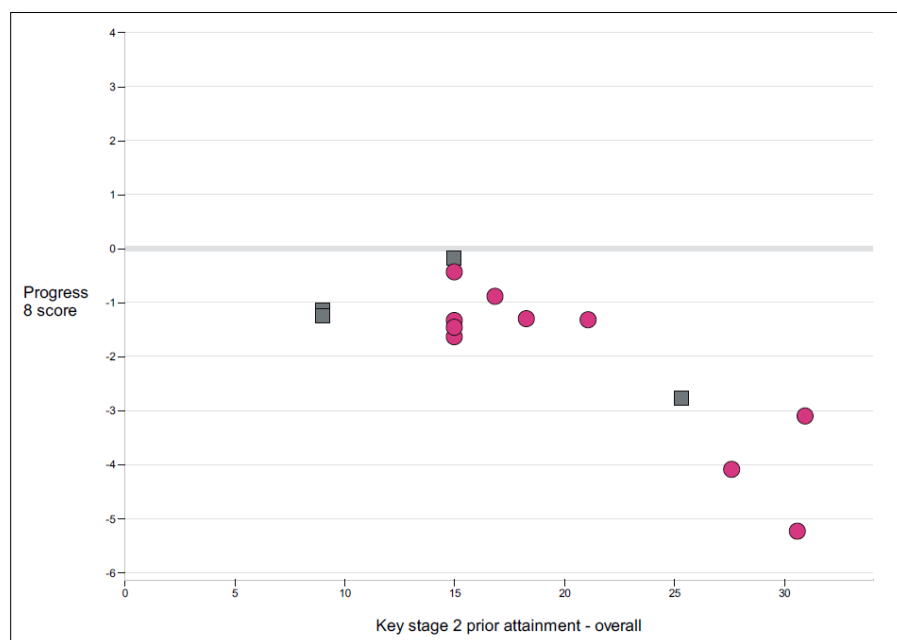
Progress 8: -1.84

Attainment 8: 7.1

Total Attainment 8: 114.3

These scores are misleading, as they also include pupils who are formally on-roll at Woodlane but attend the Medical Needs Unit provision. These pupils were attending mainstream schools, so their prior attainment (KS2) is very high, but due to substantial mental health or medical needs are unable to attend school regularly and rarely complete formal qualifications. This leads to these pupils having significantly lower scores for progress and attainment compared to Woodlane's main school pupils.

The graph below demonstrates this difference, with the lowest scoring pupils within Progress 8 (bottom right) all attending the MNU.



Progress and Attainment - Adjusted for the MNU

This is a situation unique to Woodlane. Therefore the school has removed these pupils from the data set, which produces the following scores: (this adjustment was completed on the ASP dataset)

Progress 8: -1.24 (Progress 8 improves by 0.6)

Attainment 8: 9.02 (Attainment 8 improves by 2.01)

Total Attainment 8: 108.25 (Total Attainment fell by 6 – one MNU pupil achieved a GCSE in English)

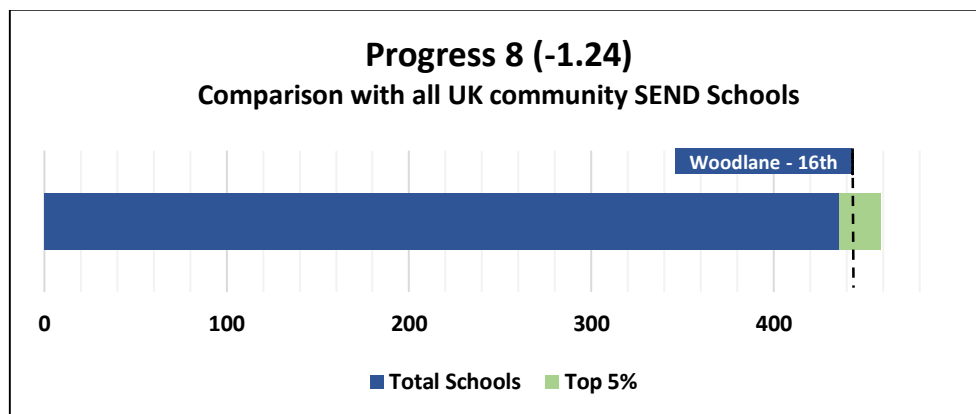
Progress 8

Progress 8 is a score that shows how much progress pupils have made between the end of key stage 2 and the end of key stage 4. These pupils are compared with their peers across England who achieved similar results at the end of that key stage.

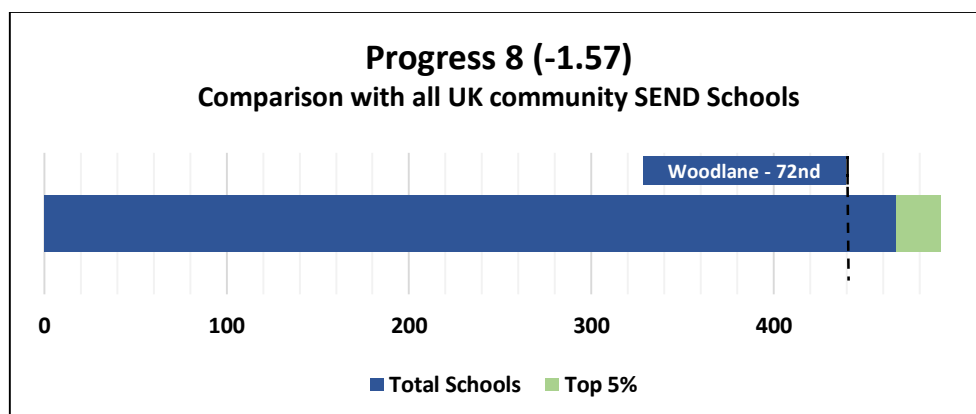
The Progress 8 score is determined by how well pupils perform in up to 8 qualifications, which include; English, Maths, 3 English Baccalaureate qualifications including Science, Computer Science, History, Geography and Languages, as well as 3 other approved qualifications. Not all qualifications offered at Woodlane are approved under the new Progress 8 Performance Tables. This score is more significant as a measure for mainstream provisions, if used with caution it can be useful for SEN.

Using the adjusted score of -1.24, the school was ranked 16th nationally, a rise of 56 places from 2016/17, (when there were a high proportion of MNU pupils within the data), and slightly above 2015/16 when the school was ranked 19th. In 2 out of the last 3 years, Woodlane has ranked well inside the top 5% of schools nationally.

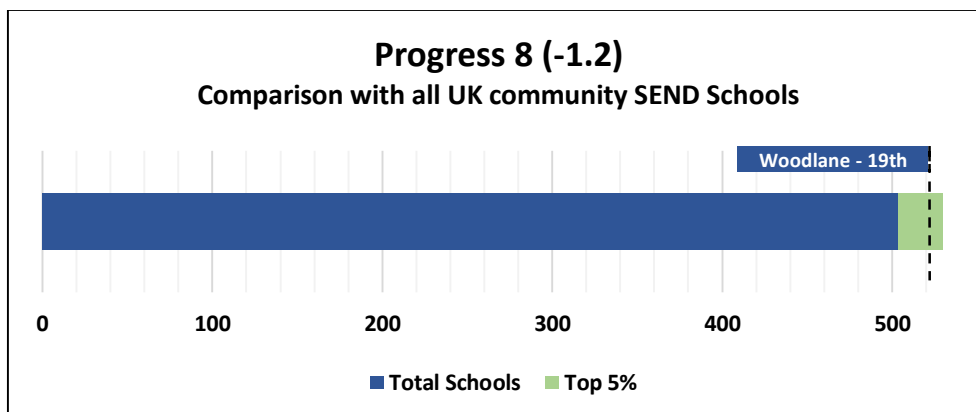
2017/18 Progress 8 Rank



2016/17 Progress 8 Rank



2015/16 Progress 8 Rank

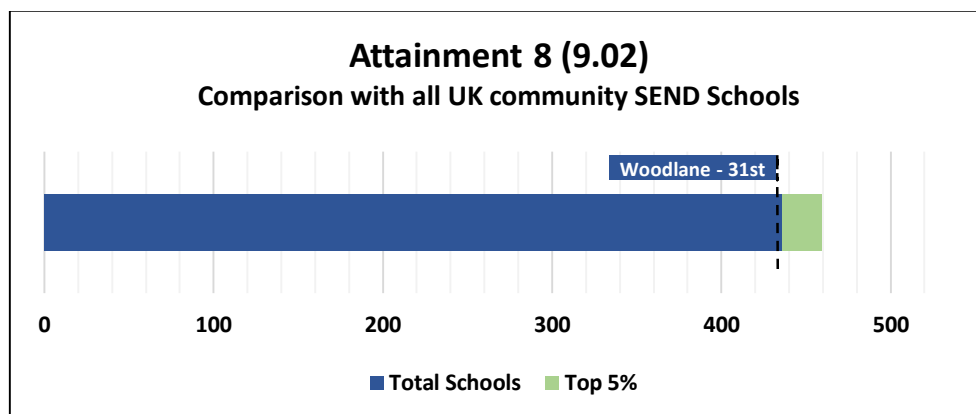


Attainment 8

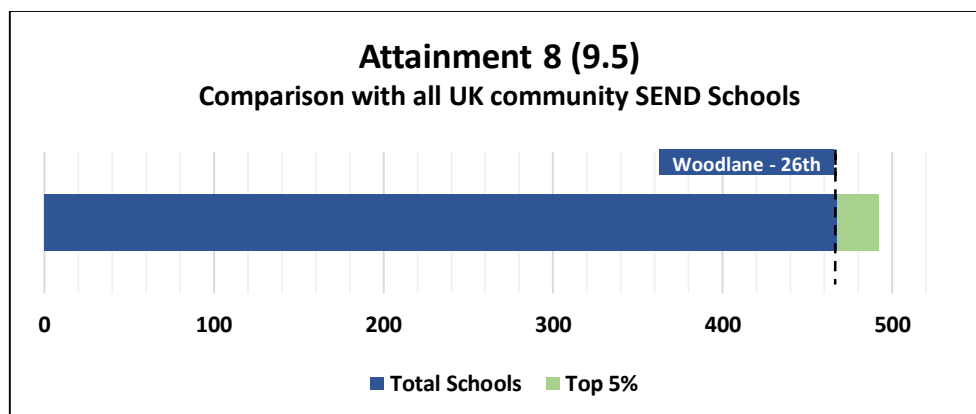
Similar to Progress 8 (above), the Attainment 8 score is determined by how well pupils perform in up to 8 qualifications, although it does not take in to account the pupil's start point (KS2) and their value added progress. This score can be used as an indicator of the range of qualifications on offer, the recognition given to these qualifications and pupil's success when completing them.

Using Woodlane's Attainment 8 score of 9.02, the school was ranked 31st nationally in 2017/18, down 5 places from 2016/17 and 6 places from 2015/16. Woodlane ranks around the top 5% of schools nationally each year.

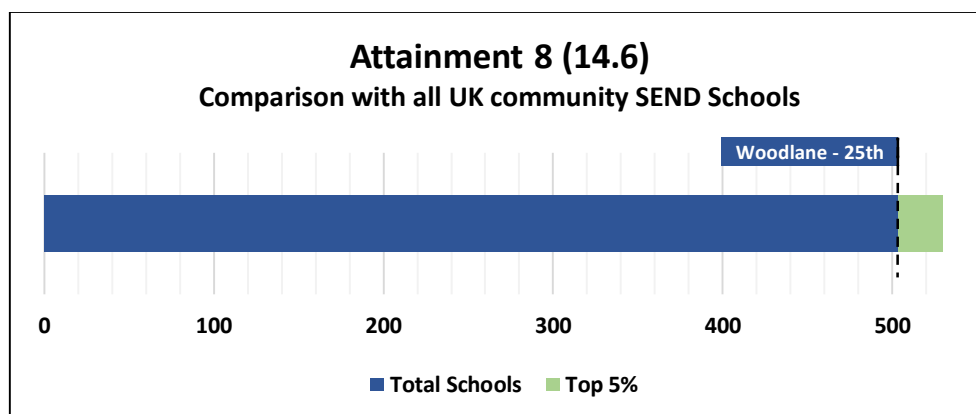
2016/17 Attainment 8 Rank



2016/17 Attainment 8 Rank



2015/16 Attainment 8 Rank



Total Attainment 8

The Total Attainment 8 score is the sum of each pupil's Attainment 8 scores. This is no longer the sum of all qualifications achieved by pupils at Woodlane for the last Year 11 cohort so is difficult to compare with previous years.

This change in the way Total Attainment is calculated, alongside increasingly challenging GCSE qualifications has contributed to a decrease over time, however it can still be a useful indicator.

Woodlane's score of 108.25 places it 54th nationally.

Woodlane's published score of 218.8 in 2016/17 meant that Woodlane was ranked 12th in the country for total attainment, moving up 2 places from 2015/16.

In 2015/16 the school was ranked 14th. It is important to note that during that academic year, Total Attainment fell by almost 90 points year on year, but Woodlane's position nationally improved.

Partnership Schools and Direct Comparisons

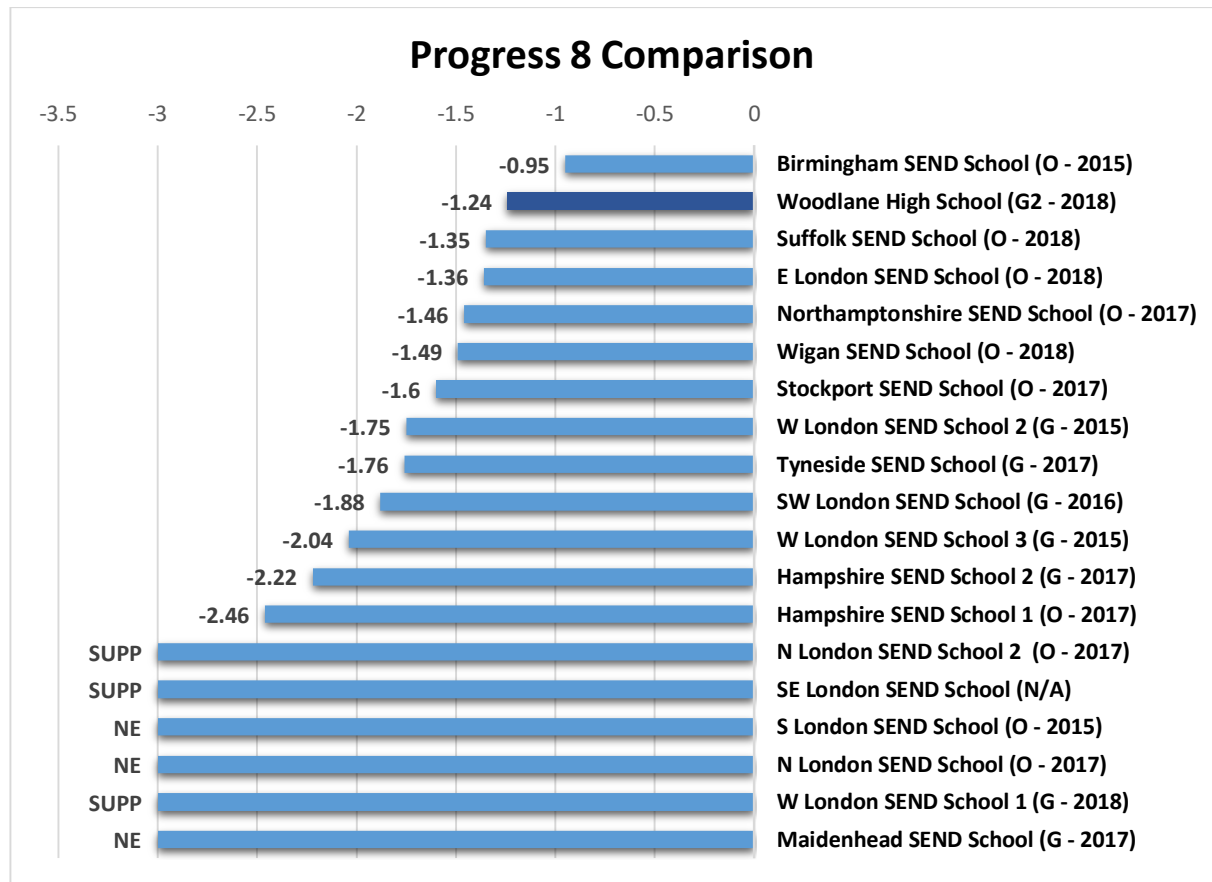
To explore these scores in greater depth, Woodlane has conducted specific analysis on the published data of the following schools. These schools are both local to Woodlane and wider afield. All these schools are similar schools to Woodlane in being a SEND provision with recognised qualifications on offer.

These schools include:

- SEND schools who were graded as outstanding in 2018,
- SEND schools who were graded as outstanding in 2017,
- Schools that with whom Woodlane has historically compared data or has a link with,
- Schools within our local authority area; Hammersmith & Fulham or the locally within London.

One of Woodlane's unique selling points is the high number of quality qualifications on offer and extensive support for pupils to achieve these. Woodlane has a comprehensive GCSE curriculum which not only scores highly in these comparisons, but allows Woodlane pupils to make rapid progress, going on to further education and preparing them for the future. The tables below demonstrate that this dedication to higher level learning places Woodlane amongst the highest achieving special schools. Pupils at Woodlane continue to score higher than almost all of the other schools. The tables below highlight Progress 8 and Attainment 8 scores, as well as a school's location and their Ofsted Grading/Date of inspection. Woodlane achieved Good – Outcome 2 in 2018.

2017/18 Progress 8 Comparison



2017/18 Attainment 8 Comparison

